

HOSPITALITY
WITH A
SYSTEM



Connecting and Managing Internet Distribution Systems

PROTEL IDS CONNECT

Product information

PROTEL IDS CONNECT



protel documentation | protel IDS connect – product information | EN_2.0 (2009-12-01)

protel IDS connect: your protel control center for online distribution



These days there are thousands of internet distribution systems (IDS), reservation platforms for the end customer, on the internet. Among the largest and best-known are expedia, booking.com, hotel.de, hrs.de, HIS, Rate Tiger: Being responsible for online sales means being spoiled for choice.

On the other hand, the bilateral data exchange between hotel and IDS causes enormous effort, particularly when a multitude of connections and interfaces has to be managed: Since there exists no data standard in this field, data needs to be collated and synchronized case-by-case.

Manage your eMarketing with protel:

- centrally
- conveniently
- seamlessly
- in real-time

protel helps solve this dilemma by providing an ever-growing number of interfaces to connect internet distribution systems to protel hotelsoftware MPE and SPE. And to keep all these multifarious connections manageable, each single interface comes with the management software protel IDS connect, which is a convenient way to manage your entire online marketing centrally from only one location.

This is particularly advantageous when one or more internet distribution systems are to be connected simultaneously. With protel IDS connect, any number of IDS and/or channel managers can be independently set up and managed for one or any number of MPE hotels - seamlessly and in real-time.

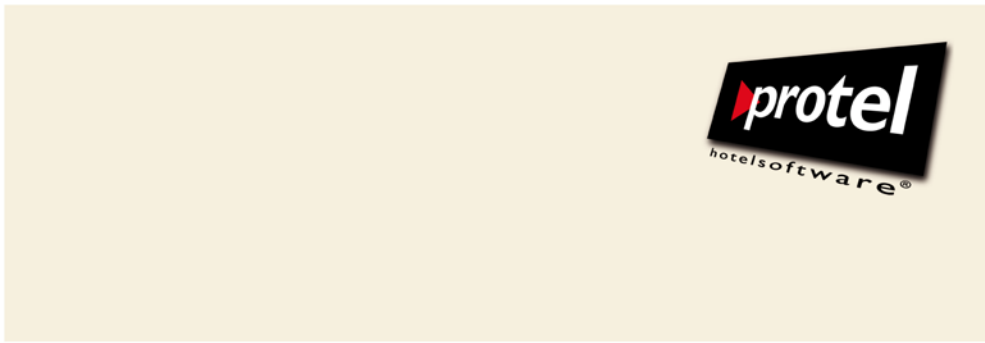
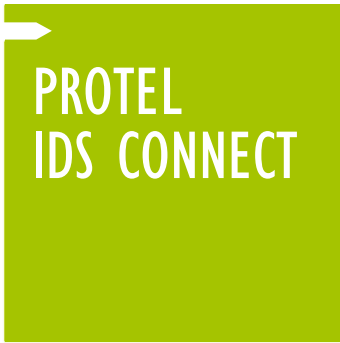
As a result, the effort of managing the bilateral data exchange between IDS and PMS will be considerably reduced.

➤ For further information on the currently available IDS interfaces please contact IDS@protel-net.com.

protel IDS connect:
Your central office for managing
and monitoring all interface
functions

Once set up, the protel IDS connect manages the data exchange between protel SPE or MPE and any distribution systems:

- connecting IDS incl. multi-channel systems
- setting up of all IDS instances in neat dialogue windows
- matching protel master data and respective IDS data
- exporting availabilities, rates and minimal lengths of stay
- importing reservations
- monitoring data exchange (availabilities ↔ reservations)
- providing all status information at a glance
- providing a booking history
- sending of e-mail-notifications
- allowing web-based or local administration



protel documentation | protel IDS connect – product information | EN_2.0 (2009-12-01)

IDS information

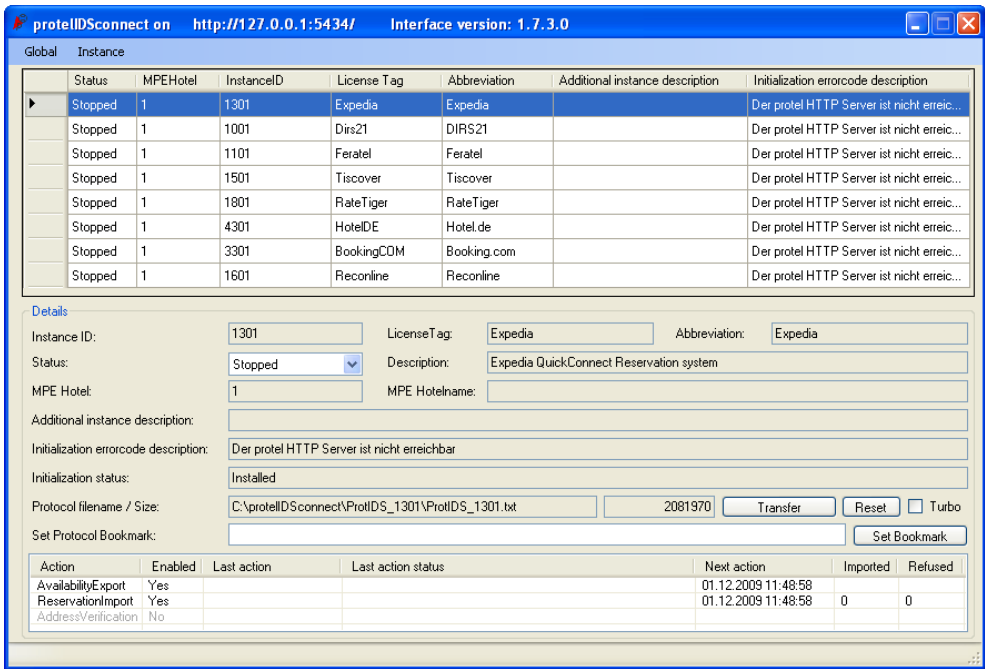
protel IDS connect manages the connections to external internet distribution systems in so-called *instances*. An instance will be created for each (MPE) hotel connection to an external system as well as for each channel of a channel manager (multi-channel system).

Setting up IDS instances

As soon as any instances have been created, protel IDS connect provides real-time information on every single instance in a table:

Information on all connected IDS instances at a glance

Access to configuration and administration dialogues



protel IDS connect: status information on all connected IDS instances at a glance

Use the configuration and administration dialogues of protel IDS connect to set up

- the instance-spanning *global* configuration and
- the required individual settings for every single instance.

To ensure a smooth data exchange between protel and different distribution platforms clear references are required. protel IDS connect operates virtually as a translator between your protel hotel software and the respective IDS. The interface module provides the “common ground” for partially divergent terms for room types, rate types etc.

Controlling rate availabilities

protel IDS connect allows highly flexible pricings for the online distribution as well. In addition to calculating fixed rates based on protel rate types you can also determine cumulative prices by using price groups. As a result you can use protel's rate availability function to change even online rates on a daily basis.

Exporting availabilities

To export availabilities the following variants are provided:

- Export of all availabilities according to the room type plan for all room types set up in the instance
- Export of the percental availabilities according to the room type plan for all room types set up in the instance

Limiting availabilities

In addition to these possibilities the following options can be configured:

- Defining a **limit** within a specific period of time.
This period of time does not have to be conform to the overall period; it can also be a specified time span.
- Defining an **allotment** within a specific period of time.
This period of time does not have to be conform to the overall period; it can also be a specified time span. Reservations within the defined period of time will then be offset against the allotment.

Two Components

protel IDS connect consists of two components:

- **protel IDS connect** provides the actual interface functions: Delivering availabilities and receiving reservations, it governs the exchange of data between protel and an internet distribution system.
- **protel IDS remote** is a configuration application designed to set up each single interface individually as well as the instance-spanning *global* configuration.

Deploy as a Service

protel IDS connect is being employed as a service. It operates independently of protel but requires a protel HTTP com-server from which to retrieve the occupancy data and to which it can send the reservation data.

Each configured IDS instance operates and communicates independently from any other instance, therefore any number of instances can be used simultaneously even for several MPE hotels.

System requirements / required components

- SQL Server 2000 or higher
- Microsoft .NET Framework 2.0 including all service packs and patches
- protel SPE, MPE or smart version 12.373 or higher
- protel IDS connect 1.204 requires protel version 12.357 or higher
- Since version 1.700 of protel IDS connect the deployment of protel IDS remote is obligatory.
- protel com-server installation with Watchdog (strongly recommended!)
- Internet and /or hard drive access rights to the IDS that is to be linked
- All NT based operating systems since Windows XP SP2
Never: Windows 2000 Prof / Server or Windows 9x / ME

▶ protel IDS connect is part of each IDS interface being purchased at protel. For more information about protel IDS connect and the currently available interfaces please contact our sales team! We are looking forward to hearing from you soon!

PROTEL IDS CONNECT



protel documentation | protel IDS connect – product information | EN_2.0 (2009-12-01)

Interested? To learn more, simply call or e-mail us. We'd be happy to help!

Contact:

protel hotelsoftware GmbH
Europaplatz 8
44269 Dortmund
Germany

- fone +49 231 915930
- fax +49 231 91593999

sales@protel-net.com

<http://www.protel-hotel-software.com>